

**SMALL GAS FIRED POWDER COATING OVENS**

4W-6H-8D through 6W-6H-12D and 8W-8H-8D (internal dimensions)

The **Small GAS Powder Coating Oven Series** is the cost-effective choice for startup companies and companies requiring batch oven processing of powder coated parts. *Take a few minutes and compare the engineering, quality of materials and workmanship to that of other brands. We think you will appreciate the difference.*

The **Small GAS Powder Coating Oven** is available in **NATURAL GAS** or **PROPANE** and is designed to operate at 500°F maximum temperature.

The **Small GAS Batch Oven Series** is constructed of heavy gauge carbon steel and painted a slate gray. The Batch Oven interior is constructed of Aluminized steel. Heating is provided by Power Flame Burner is housed in the burner chamber plenum to heat the air to desired temperature. The burner chamber is rear mounted.

The **Small Gas Oven Series** is available with the following internal dimensions:

- 4W-6H-8D
- 4W-6H-8D
- 4W-6H-12D
- 6W-6H-4D
- 6W-6H-8D
- 6W-6H-12D
- 8W-8H-8D

The **Model 4W-6H-8D and 4W-6H-12D Small GAS Powder Coating Oven Series** features double doors as standard with 3" of high density thermofiber insulation. **The Model 4W-6H-8D and 4W-6H-12D Small GAS Batch Oven is completely wired and tested.**



**Model 4W-6H-8D ID Small GAS Batch Oven**

The **Small GAS Batch Oven Series** includes the following special features:

- Horizontal airflow circulation system,
- 3" thick insulated walls,
- Insulated ceiling, 3/16" plate floor,
- CRS exterior painted slate gray,
- Aluminized interior ,
- UL listed control panel,
- 480/460/240/230/208 single or three phase, specify with order,
- Yokogawa Single Set Point UT150 electronic temperature controller
- High limit,
- Batch timer,
- Powered exhaust

Unauthorized service will void manufacturers warranty and is performed at the expense of the purchaser. Prices subject to change without notice. Leads times may vary. All powder system sales final. Manufacturer limited warranty applies. Replacement parts or unit replacement at the discretion of manufacturer. Equipment damaged by shipping is the responsibility of the freight hauler. Documentation of freight damage is the responsibility of the purchaser. Ovens and booths do not carry ETL certification as a unit unless otherwise specified. 15% cancellation fee. Not included: freight, taxes, permitting, regulatory review, inspections, certifications, mechanical or electrical installation, fire suppression or exhaust duct.

**Small GAS FIRED Powder Coating Ovens – Continued****FEATURES FULLY MODULATING  
POWERFLAME BURNERS WITH HIGH  
TURNDOWN RATIO !**

The **Small GAS Batch Oven Series** is equipped with two doors at one end held closed by FM approved slam latches.

The control panel for the oven is on the right hand side of the chamber. The panel houses the electrical components and is NEMA 1 and UL rated.

The **Small GAS Batch Oven Series** has powered exhaust located in the rear of the oven. The exhaust is activated via the oven ON switch and will be on at all times.

**Model 6W-6H-8D ID Small GAS Batch Oven**

**Powder Coating Oven** - One (1) 4'W x 6'H x 8'D (ID) **NATURAL GAS or PROPANE** oven designed to operate at 500°F maximum temperature including the following special features: compound horizontal airflow circulation system, 3" thick insulated walls, ceiling and a 3/16" plate floor, 1-24" circulation fan, CRS exterior painted slate gray, Aluminized interior, UL listed control panel, 480/460/240/230/208 single or three phase, specify with order, Yokogawa Single Set Point UT150 electronic temperature controller and high limit, batch timer, 300 CFM exhaust, effective work area: 4'W x 6'H x 8L

External Dimensions: 6'3" W x 7'H x 12' 6" L Ships in three sections, 400,000 BTU. QTY (1) recirculation fan @ 3500 CFM; 1/2HP. Oven to be constructed of heavy gauge carbon steel and painted a slate gray. Oven interior to be constructed of Aluminized steel. Heating provided by Power Flame 400,000 BTU Burner will be housed in the plenum to heat the air to desired temperature. The plenum will be rear mounted. The unit will have two doors at one end held closed by FM approved slam latches. The control panel for the oven will be on the right hand side of the chamber. The panel will house the electrical components and be NEMA 1 and UL rated. The unit will have a 300 CFM exhaust located in the rear of the oven. The exhaust will be activated via the oven on switch and will be on at all times. The exhaust outlet will be 4" dia.

**\$ 13,950.00**

Unauthorized service will void manufacturers warranty and is performed at the expense of the purchaser. Prices subject to change without notice. Leads times may vary. All powder system sales final. Manufacturer limited warranty applies. Replacement parts or unit replacement at the discretion of manufacturer. Equipment damaged by shipping is the responsibility of the freight hauler. Documentation of freight damage is the responsibility of the purchaser. Ovens and booths do not carry ETL certification as a unit unless otherwise specified. 15% cancellation fee. Not included: freight, taxes, permitting, regulatory review, inspections, certifications, mechanical or electrical installation, fire suppression or exhaust duct.



**Small GAS FIRED Powder Coating Ovens – Continued**

<p><b>Powder Coating Oven</b> - One (1) 4'W x 6'H x 12'D (ID) <b>NATURAL GAS or PROPANE</b> oven designed to operate at 500°F maximum temperature including the following special features: compound horizontal airflow circulation system, 3" thick insulated walls, ceiling and a 3/16" plate floor, 1-24" circulation fan, CRS exterior painted slate gray, Aluminized interior, UL listed control panel, 480/460/240/230/208 single or three phase, specify with order, Yokogawa Single Set Point UT150 electronic temperature controller and high limit, batch timer, 450 CFM exhaust, effective work area: 4'W x 6'H x 12L                  External Dimensions: 6'3" W x 7'H x 16' 6" L Ships in three sections, 400,000 BTU. QTY (1) recirculation fan @ 3500 CFM; 1/2HP. Oven to be constructed of heavy gauge carbon steel and painted a slate gray. Oven interior to be constructed of Aluminized steel. Heating provided by PowerFlame 400,000 BTU Burner will be housed in the plenum to heat the air to desired temperature. The plenum will be rear mounted. The unit will have two doors at one end held closed by FM approved slam latches. The control panel for the oven will be on the right hand side of the chamber. The panel will house the electrical components and be NEMA 1 and UL rated. The unit will have a 450 CFM exhaust located in the rear of the oven. The exhaust will be activated via the oven on switch and will be on at all times. The exhaust outlet will be 4" dia.</p>	<p><b>\$ 16,212.00</b></p>
<p><b>Powder Coating Oven</b> - One (1) 6'W x 6'H x 8'D (ID) <b>NATURAL GAS or PROPANE</b> oven designed to operate at 500°F maximum temperature including the following special features: compound horizontal airflow circulation system, 3" thick insulated walls, ceiling and a 3/16" plate floor, 1-24" circulation fan, CRS exterior painted slate gray, Aluminized interior, UL listed control panel, 480/460/240/230/208 single or three phase, specify with order, Yokogawa Single Set Point UT150 electronic temperature controller and high limit, batch timer, 600 CFM exhaust, effective work area: 6'W x 6'H x 8L                  External Dimensions: 8'3"W x 7'H x 12'6"L Ships in three sections, 400,000 BTU. QTY (1) recirculation fan @ 3500 CFM; 1/2HP. Oven to be constructed of heavy gauge carbon steel and painted a slate gray. Oven interior to be constructed of Aluminized steel. Heating provided by Power Flame 400,000 BTU Burner will be housed in the plenum to heat the air to desired temperature. The plenum will be rear mounted. The unit will have two doors at one end held closed by FM approved slam latches. The control panel for the oven will be on the right hand side of the chamber. The panel will house the electrical components and be NEMA 1 and UL rated. The unit will have a 300 CFM exhaust located in the rear of the oven. The exhaust will be activated via the oven on switch and will be on at all times. The exhaust outlet will be 4" dia</p>	<p><b>\$ 15,950.00</b></p>
<p><b>Powder Coating Oven</b> - One (1) 6'W x 6'H x 12'D (ID) <b>NATURAL GAS or PROPANE</b> oven designed to operate at 500°F maximum temperature including the following special features: compound horizontal airflow circulation system, 3" thick insulated walls, ceiling and a 3/16" plate floor, 1-24" circulation fan, CRS exterior painted slate gray, Aluminized interior, UL listed control panel, 480/460/240/230/208 single or three phase, specify with order, Yokogawa Single Set Point UT150 electronic temperature controller and high limit, batch timer, 450 CFM exhaust, effective work area: 6'W x 6'H x 12L                  External Dimensions: 8'3"W x 7'H x 16'6"L Ships in three sections, 700,000 BTU. QTY (1) recirculation fan @ 4000 CFM; 1/2HP. Oven to be constructed of heavy gauge carbon steel and painted a slate gray. Oven interior to be constructed of Aluminized steel. Heating provided by PowerFlame 700,000 BTU Burner will be housed in the plenum to heat the air to desired temperature. The plenum will be rear mounted. The unit will have two doors at one end held closed by FM approved slam latches. The control panel for the oven will be on the right hand side of the chamber. The panel will house the electrical components and be NEMA 1 and UL rated. The unit will have a 600 CFM exhaust located in the rear of the oven. The exhaust will be activated via the oven on switch and will be on at all times. The exhaust outlet will be 6" dia</p>	<p><b>\$ 17,950.00</b></p>

Unauthorized service will void manufacturers warranty and is performed at the expense of the purchaser. Prices subject to change without notice. Leads times may vary. All powder system sales final. Manufacturer limited warranty applies. Replacement parts or unit replacement at the discretion of manufacturer. Equipment damaged by shipping is the responsibility of the freight hauler. Documentation of freight damage is the responsibility of the purchaser. Ovens and booths do not carry ETL certification as a unit unless otherwise specified. 15% cancellation fee. Not included: freight, taxes, permitting, regulatory review, inspections, certifications, mechanical or electrical installation, fire suppression or exhaust duct.

**Small GAS FIRED Powder Coating Ovens – Continued**

**Powder Coating Oven** - One (1) piece fully assembled **8'W x 8'H x 8'D (ID) NATURAL GAS or PROPANE** oven designed to operate at 500°F maximum temperature including the following special features: Compound horizontal airflow circulation system, 4.5" thick insulated walls, ceiling and a 3/16" plate floor, (2) 24" circulation fan, CRS exterior painted slate gray, Aluminized interior, UL listed control panel, 480/460/240/230/208 single or three phase, specify with order, Yokogawa Single Set Point UT150 electronic temperature controller and high limit, batch timer, 800 CFM exhaust, effective work area: 8'W x 8'H x 8'L

External Dimensions: 10'1" W x 11'4" H x 9'2" L Ships fully assembled, 700,000 BTU. QTY (1) recirculation fan @ 7,500 CFM; (2) 1/2HP. Oven to be constructed of heavy gauge carbon steel and painted a slate gray. Oven interior to be constructed of Aluminized steel. Heating provided by PowerFlame 700,000 BTU Burner will be housed in the plenum to heat the air to desired temperature. The plenum will be top mounted. The unit will have two doors at one end held closed by FM approved slam latches. The control panel for the oven will be on the right hand side of the chamber. The panel will house the electrical components and be NEMA 1 and UL rated. The unit will have a 800 CFM exhaust located in the rear of the oven. The exhaust will be activated via the oven on switch and will be on at all times. The exhaust outlet will be 6" dia

**\$ 20,950.00**

Unauthorized service will void manufacturers warranty and is performed at the expense of the purchaser. Prices subject to change without notice. Leads times may vary. All powder system sales final. Manufacturer limited warranty applies. Replacement parts or unit replacement at the discretion of manufacturer. Equipment damaged by shipping is the responsibility of the freight hauler. Documentation of freight damage is the responsibility of the purchaser. Ovens and booths do not carry ETL certification as a unit unless otherwise specified. 15% cancellation fee. Not included: freight, taxes, permitting, regulatory review, inspections, certifications, mechanical or electrical installation, fire suppression or exhaust duct.



## LARGE GAS FIRED WALK-IN CURING OVENS

Consider these ***GREAT Prices!***  
Many other sizes are available at  
***Super Savings!***

**KOTEmaster™**  
***Performance AND Value***



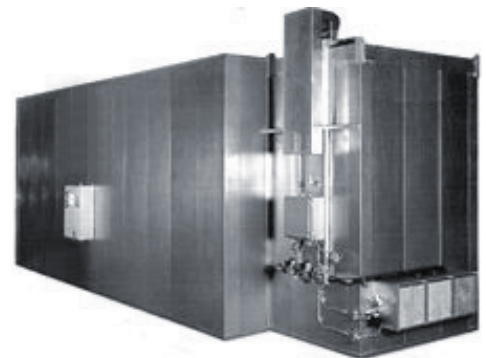
Shown: 8-8-20 w/ rear burner box  
Sizes up to 12-12-55  
Top, rear or side burner available

### Shipping Configuration:

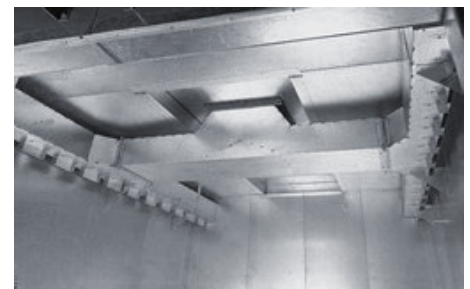
- Burner Box and manifold: **completely assembled.**
- Electrical control panel: **completely assembled.**
- Powered exhaust fan: **completely assembled.**
- Insulated 6" panels & trim package: **palletized.**
- Doors: **fabricated, includes all hardware.**
- Ductwork: **fabricated, pre-formed and notched.**
- **All fasteners and mounting hardware are included.**
- **Complete detailed assembly, startup and operation instructions are included.**
- **Easy-tune Maxon Burner for site-specific efficiency.**

### Standard Features Include:

- Each wall/ceiling **PANEL** is **PRE-ASSEMBLED.** *Compare to others!*
- **Quality TONGUE-GROOVE** construction. *Compare to others!*
- **True INDUSTRIAL-GRADE** fans complete with motor starters.
- **Fully PRE-ASSEMBLED, PRE-WIRED, and PRE-PIPED** modulating burner box. Fully tested prior to ship.
- **PRE-WIRED** Premium Digital Control Panel is U.L and C.U.L listed.
- 6" thick aluminized steel insulated oven panel construction.
- Aluminized steel trim components.
- Prefabricated corner trim sections.
- Top or rear mounted burner box system.
- Maxon slot fired **modulating** burner with filtered combustion air.
- Gas pressure 14 inches WC (water column) min, 4 PSI max.
- One (1) **pre-assembled** double door set.
- Aluminized steel ceiling mounted ductwork designed to **SMACNA standards to avoid direct air impingement/disturbance of powder**
- Exhaust fan.
- Honeywell digital temperature controller and high limit.
- Honeywell flame safeguard system with UV flame sensor.
- Powered exhaust and automatic purge timers.
- Installation hardware, drawings and instructions.
- Designed and built to NFPA, FM or IRI and OSHA standards.
- 2 Year Parts Warranty



8-8-15 Oven w/ Rear Gas Burner



Sample Ductwork

Unauthorized service will void manufacturers warranty and is performed at the expense of the purchaser. Prices subject to change without notice. Leads times may vary. All powder system sales final. Manufacturer limited warranty applies. Replacement parts or unit replacement at the discretion of manufacturer. Equipment damaged by shipping is the responsibility of the freight hauler. Documentation of freight damage is the responsibility of the purchaser. Ovens and booths do not carry ETL certification as a unit unless otherwise specified. 15% cancellation fee. Not included: freight, taxes, permitting, regulatory review, inspections, certifications, mechanical or electrical installation, fire suppression or exhaust duct.



## Large Series GAS FIRED Walk-in Ovens – Continued

Available for use with natural gas (NG) or propane (LPG), our Gas-fired Ovens use fully modulating Maxon burner systems, providing maximum energy efficiency and reduced thermal shock caused by simple on/off burners. Internally powered air seals minimize heat loss, and coupled with the energy efficient modulating Maxon burner, assure a cost-effective system.

The Gas-fired Oven Series features exclusive air re-circulating system is designed to SMACNA standards and provides maximum air coverage and efficient thermal distribution while eliminating direct air impingement. The Gas-fired Oven Series is specifically designed to assure that uncured powder remains undisturbed at the start of the curing cycle, without the high cost of variable speed drives.

The burner system is delivered as a fully pre-assembled package with integral re-circulating fan and insulated combustion chamber, all shop-assembled including mounting and piping for all combustion valves, regulators, pressure sensors, Maxon modulating burner, and equipment for the oven. The burner is provided with automatic push-button electric ignition, flame relay protection, and temperature indicating controller, all in accordance with current industrial and commercial standards. Our ovens are highly efficient and are ideal for preheating or drying parts and curing various coatings.

- **Preheat:** prepares metal, medium density fiberboard or other substrates for your coating process.
- **Dry-off:** eliminates water moisture accumulated during the pretreatment washing process
- **Cure:** elevates the part and coating temperature to achieve the desired coating performance.

## Minimizing Operating Costs and Maximizing Heating Power

The BTU heating value content per cubic foot of natural gas varies from 1000 to 1100. The *full* heat content of the gas is released at the *stoichiometric mixture* of fuel and oxygen. The stoichiometric mixture **is required** for complete combustion of the gas. Complete combustion will convert all fuel to CO<sub>2</sub> and water, releasing the full heat content of the gas, because there is precisely the correct volume of combustion air to achieve stoichiometric optimal fuel/oxygen mixing.

For example: simply increasing oxygen content by forcing only cool ambient air, will require MORE fuel, which will simply increase the operating cost of the oven. Our ovens induce preheated ambient air *only in the precise fuel/oxygen ratio* to achieve the lowest fuel operating cost. **Select a powder coating oven that does NOT require an air blower for the injection of combustion air, thereby lowering energy, operating and maintenance costs (no moving parts).**

Large-scale industrial gas combustion operators, such as gas-fired municipal electric-generation plants, have known for decades that **significant fuel cost savings come from preheating** combustion air with expensive heat exchangers, recovering waste-heat energy. They do this because it can decrease their total fuel operating costs by up to 25%. The amount of air being induced, to be precisely stoichiometric, must be *continually tuned* with the gas BTU content. This is because the precise gas energy being delivered by the commercial gas supplier, is almost always varying moment to moment, by up to 10%. Instead of *forcing* predetermined fixed rate energy-inefficient cold air with a blower, our ovens use a self-tuning air-venturi effect that is accurately driven by the gas BTU content at the moment, to be precisely stoichiometric.

Unauthorized service will void manufacturers warranty and is performed at the expense of the purchaser. Prices subject to change without notice. Leads times may vary. All powder system sales final. Manufacturer limited warranty applies. Replacement parts or unit replacement at the discretion of manufacturer. Equipment damaged by shipping is the responsibility of the freight hauler. Documentation of freight damage is the responsibility of the purchaser. Ovens and booths do not carry ETL certification as a unit unless otherwise specified. 15% cancellation fee. Not included: freight, taxes, permitting, regulatory review, inspections, certifications, mechanical or electrical installation, fire suppression or exhaust duct.



## Large Series GAS FIRED Walk-in Ovens – Continued

### Customers Responsibilities

- Mechanical and electrical installation.
- Freight charges associated with the delivery of this oven.
- Providing a source of electrical power and connecting to control panel.
- Connecting from exhaust blower outlet to out of doors.
- Any permits required by local codes for the installation and/or operation of the oven.
- Providing a source of propane or natural gas and connecting to burner termination point fitting.
- Unloading of delivery carrier and moving oven to desired plant site.
- Providing a level concrete floor for the oven to sit upon.
- Venting from pressure switch and the main regulator to out of doors as required by code.
- Fire suppression as required.
- Tax as applicable.

### Terms of Sale

50% down with order, balance prior to ship

Unauthorized service will void manufacturers warranty and is performed at the expense of the purchaser. Prices subject to change without notice. Leads times may vary. All powder system sales final. Manufacturer limited warranty applies. Replacement parts or unit replacement at the discretion of manufacturer. Equipment damaged by shipping is the responsibility of the freight hauler. Documentation of freight damage is the responsibility of the purchaser. Ovens and booths do not carry ETL certification as a unit unless otherwise specified. 15% cancellation fee. Not included: freight, taxes, permitting, regulatory review, inspections, certifications, mechanical or electrical installation, fire suppression or exhaust duct.



**Large Series GAS FIRED Walk-in Ovens – Continued**

**KOTEmaster™ Large GAS FIRED Walk-in Ovens - Natural Gas or Propane (unassembled)**

Internal Working Dimension (ID) (clear opening)	External Dimensions (top burner box)	External Dimensions (rear burner box)	Maxon Burner (BTU)	Recirc. Air (CFM)
6' W -6'H -15'D	8' 6"W -11' 6"H -16' 5"D	8' 6"W -8' 0"H -20' 1"D	600,000	5,000
6' W -6'H -16'D	8' 6"W -11' 6"H -17' 5"D	8' 6"W -8' 0"H -21' 1"D	600,000	5,000
6' W -6'H -20'D	8' 6"W -11' 6"H -21' 5"D	8' 6"W -8' 0"H -25' 1"D	900,000	5,700
6' W -6'H -25'D	8' 6"W -11' 6"H -26' 5"D	8' 6"W -8' 0"H -30' 1"D	1,000,000	6,200
8' W -8'H -10'D	10' 6"W -13' 3"H -11' 6"D	10' 6"W -10'H -15' 1"D	600,000	5,000
8' W -8'H -15'D	10' 6"W -13' 3"H -16' 6"D	10' 6"W -10'H -20' 1"D	1,000,000	6,200
8' W -8'H -16'D	10' 6"W -13' 3"H -17' 6"D	10' 6"W -10'H -21' 1"D	1,000,000	6,200
8' W -8'H -20'D	10' 6"W -13' 3"H -21' 6"D	10' 6"W -10'H -25' 1"D	1,200,000	7,500
8' W -8'H -21'D	10' 6"W -13' 3"H -22' 6"D	10' 6"W -10'H -26' 1"D	1,200,000	7,500
8' W -8'H -25'D	10' 6"W -13' 5"H -26' 6"D	10' 6"W -10'H -30' 3"D	1,500,000	9,600
8' W -8'H -26'D	10' 6"W -13' 5"H -27' 6"D	10' 6"W -10'H -31' 3"D	1,500,000	9,600
8' W -8'H -30'D	10' 6"W -13' 9"H -31' 6"D	10' 6"W -10'H -35' 7"D	1,800,000	12,800
8' W -8'H -35'D	10' 6"W -13' 9"H -36' 6"D	10' 6"W -10'H -40' 7"D	2,100,000	14,500
8' W -8'H -40'D	10' 6"W -14' 3"H -41' 6"D	10' 6"W -10'H -46' 1"D	2,700,000	16,500
8' W -8'H -45'D	10' 6"W -14' 3"H -46' 6"D	10' 6"W -10'H -51' 1"D	3,100,000	18,600
8' W -8'H -50'D	10' 6"W -14' 3"H -51' 6"D	10' 6"W -10'H -56' 1"D	3,500,000	20,700
8' W -8'H -55'D	10' 6"W -14' 3"H -56' 6"D	10' 6"W -10'H -61' 1"D	3,900,000	22,800
8' W -10'H -21'D	10' 6"W -15' 5"H -27' 6"D	10' 6"W -12'H -26' 3"D	1,800,000	12,800
8' W -10'H -26'D	10' 6"W -15' 5"H -27' 6"D	10' 6"W -12'H -31' 3"D	2,300,000	14,800
10' W -8'H -10'D	12' 6"W -13' 9"H -11' 6"D	12' 6"W -10'H -15' 7"D	900,000	5,000
10' W -8'H -15'D	12' 6"W -13' 9"H -16' 6"D	12' 6"W -10'H -20' 7"D	1,200,000	7,500
10' W -8'H -16'D	12' 6"W -13' 9"H -17' 6"D	12' 6"W -10'H -21' 7"D	1,200,000	7,500
10' W -8'H -20'D	12' 6"W -13' 9"H -21' 6"D	12' 6"W -10'H -25' 7"D	1,800,000	12,800
10' W -8'H -21'D	12' 6"W -13' 9"H -22' 6"D	12' 6"W -10'H -26' 7"D	1,800,000	12,800
10' W -8'H -25'D	12' 6"W -13' 9"H -26' 6"D	12' 6"W -10'H -30' 7"D	1,800,000	12,800
10' W -8'H -26'D	12' 6"W -13' 9"H -27' 6"D	12' 6"W -10'H -31' 7"D	1,800,000	12,800
10' W -8'H -30'D	12' 6"W -14' 3"H -31' 6"D	12' 6"W -10'H -36' 1"D	2,100,000	13,700

**Continued on next page**

Unauthorized service will void manufacturers warranty and is performed at the expense of the purchaser. Prices subject to change without notice. Leads times may vary. All powder system sales final. Manufacturer limited warranty applies. Replacement parts or unit replacement at the discretion of manufacturer. Equipment damaged by shipping is the responsibility of the freight hauler. Documentation of freight damage is the responsibility of the purchaser. Ovens and booths do not carry ETL certification as a unit unless otherwise specified. 15% cancellation fee. Not included: freight, taxes, permitting, regulatory review, inspections, certifications, mechanical or electrical installation, fire suppression or exhaust duct.



Table 1: Continued

**KOTEmaster™ Large Series GAS FIRED Walk-in Ovens - Natural Gas or Propane (unassembled)**

Internal Working Dimension (ID) (clear opening)	External Dimensions (top burner box)	External Dimensions (rear burner box)	Maxon Burner (BTU)	Recirc. Air (CFM)
10' W -10'H -10'D	12' 6"W -15' 3"H -11' 6"D	12' 6"W -12'H -15' 1"D	900,000	7,100
10' W -10'H -15'D	12' 6"W -15' 5"H -16' 6"D	12' 6"W -12'H -20' 3"D	1,200,000	8,400
10' W -10'H -20'D	12' 6"W -15' 9"H -21' 6"D	12' 6"W -12'H -25' 7"D	1,800,000	12,800
10' W -10'H -21'D	12' 6"W -15' 9"H -22' 6"D	12' 6"W -12'H -26' 7"D	1,800,000	12,800
10' W -10'H -25'D	12' 6"W -15' 9"H -26' 6"D	12' 6"W -12'H -39' 1"D	2,100,000	14,500
10' W -10'H -26'D	12' 6"W -15' 9"H -27' 6"D	12' 6"W -12'H -40' 1"D	2,100,000	14,500
10' W -10'H -30'D	12' 6"W -16' 3"H -31' 6"D	12' 6"W -12'H -36' 1"D	2,700,000	18,700
10' W -10'H -35'D	12' 6"W -16' 6"H -36' 6"D	12' 6"W -12'H -41' 4"D	3,000,000	20,800
10' W -10'H -40'D	12' 6"W -16' 11"H -41' 6"D	12' 6"W -12'H -46' 9"D	3,600,000	23,600
10' W -10'H -45'D	12' 6"W -16' 11"H -46' 6"D	12' 6"W -12'H -51' 9"D	3,600,000	23,600
12' W -10'H -10'D	14' 6"W -15' 5"H -11' 10"D	14' 6"W -12'H -15' 3"D	1,200,000	7,500
12' W -10'H -15'D	14' 6"W -15' 9"H -16' 10"D	14' 6"W -12'H -20' 7"D	1,800,000	12,800
12' W -10'H -20'D	14' 6"W -16' 3"H -21' 10"D	14' 6"W -12'H -25' 1"D	2,100,000	14,500
12' W -10'H -25'D	14' 6"W -16' 6"H -26' 10"D	14' 6"W -12'H -31' 4"D	2,700,000	18,700
12' W -10'H -30'D	14' 6"W -16' 11"H -31' 10"D	14' 6"W -12'H -36' 4"D	3,000,000	20,800
12' W -12'H -10'D	14' 6"W -17' 5"H -11' 10"D	14' 6"W -14'H -15' 3"D	1,500,000	9,600
12' W -12'H -15'D	14' 6"W -17' 9"H -16' 10"D	14' 6"W -14'H -20' 7"D	1,800,000	11,000
12' W -12'H -20'D	14' 6"W -18' 3"H -21' 10"D	14' 6"W -14'H -25' 1"D	2,400,000	16,500
12' W -12'H -25'D	14' 6"W -18' 6"H -26' 10"D	14' 6"W -14'H -31' 4"D	3,000,000	20,800
12' W -12'H -30'D	14' 6"W -18' 11"H -31' 10"D	14' 6"W -14'H -36' 4"D	3,600,000	23,600
12' W -12'H -35'D	14' 6"W -18' 11"H -36' 10"D	14' 6"W -14'H -41' 4"D	4,200,000	25,200
12' W -12'H -40'D	14' 6"W -18' 11"H -41' 10"D	14' 6"W -14'H -46' 4"D	4,800,000	26,800
12' W -12'H -45'D	14' 6"W -18' 11"H -46' 10"D	14' 6"W -14'H -51' 4"D	5,400,000	28,400
12' W -12'H -50'D	14' 6"W -18' 11"H -51' 10"D	14' 6"W -14'H -56' 4"D	5,800,000	30,000
12' W -12'H -55'D	14' 6"W -18' 11"H -56' 10"D	14' 6"W -14'H -61' 4"D	6,400,000	31,600

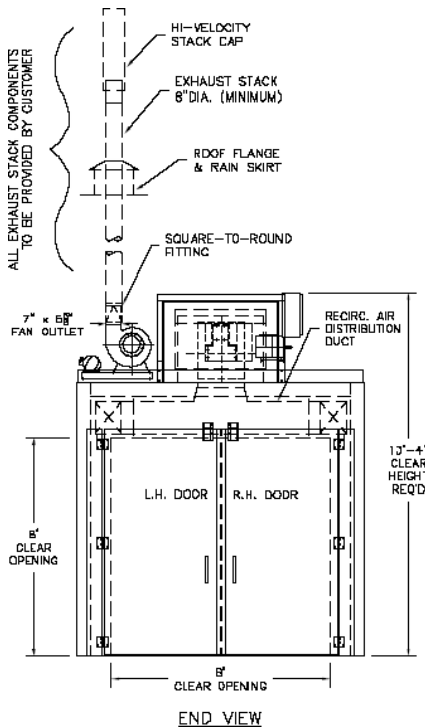
\*Top burner box standard.  
 Rear or side burner box at additional charge.  
 Freight and installation not included

Unauthorized service will void manufacturers warranty and is performed at the expense of the purchaser. Prices subject to change without notice. Leads times may vary. All powder system sales final. Manufacturer limited warranty applies. Replacement parts or unit replacement at the discretion of manufacturer. Equipment damaged by shipping is the responsibility of the freight hauler. Documentation of freight damage is the responsibility of the purchaser. Ovens and booths do not carry ETL certification as a unit unless otherwise specified. 15% cancellation fee. Not included: freight, taxes, permitting, regulatory review, inspections, certifications, mechanical or electrical installation, fire suppression or exhaust duct.



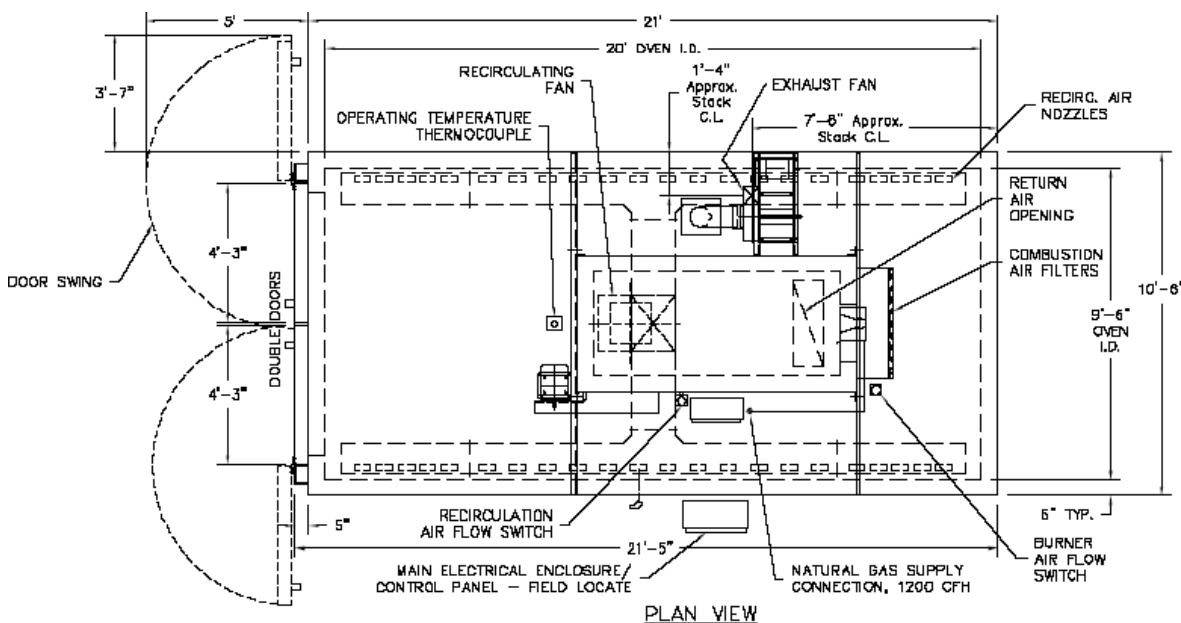
**Large Series GAS FIRED Walk-in Ovens – Continued**  
**TOP Burner 8-8-20 Gas Oven Drawing (For Sample Use Only)**

OVEN SPECIFICATIONS:



RECIRCULATING FAN	15"FC, 7,500 CFM @ 1.4" SP 1021 RPM (1240 Max. Safe RPM) 5 HP 1750 RPM, ODP
MOTOR	
EXHAUST FAN	COMPACT-GI 126, 900 ACFM 1"SP@70" T 1850 RPM (3800 Max. Safe RPM) 3/4 HP 1750 RPM, ODP
MOTOR	
BURNER	1,200,000 BTU/Hr
FUEL	PROPANE 2500 BTU/CU.FT.
GAS MANIFOLD	1-1/4" IPS, FM
SUPPLY GAS PRESSURE	MIN. 14" W.C. (@ FULL FLOW) MAX. 4 PSI
PURGE TIME REQUIRED	12 MINUTES @ 900 CFM EXHAUST
INSULATED OVEN PANELS	6" THICK-20 GA. ALUMINIZED SKINS
CLEAR WORK OPENING	8'W x 8'H x 20'L
EXHAUST STACK/ROOF FLASHING	BY OTHERS
ELECTRICAL CONTROL PANEL	"UL" LISTED
ELECTRICAL SERVICE	230V/1PH/60HZ
OVEN FLOOR	NONE
DUCT NOZZLES	(42) 2x8 x 3"L
CONTROL OPTIONS:	BATCH TIMER

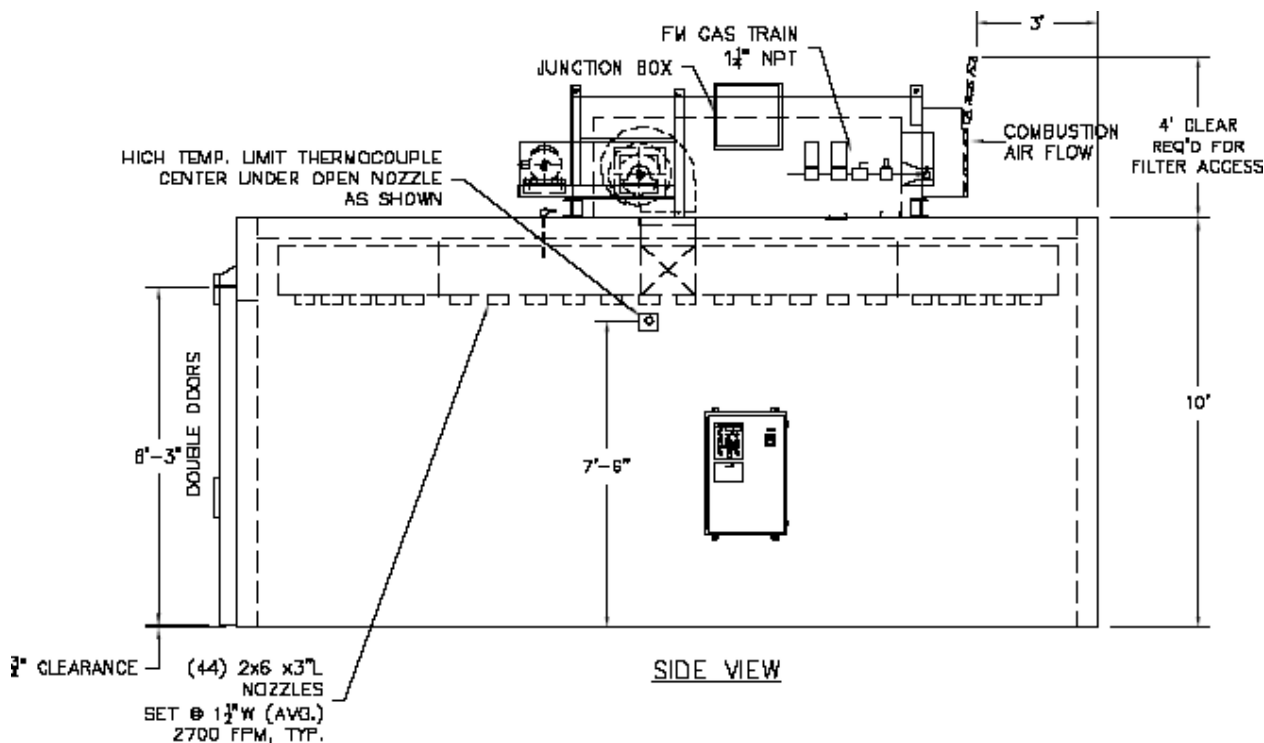
NOTE: THE ELECTRICAL CONTROL PANEL IS SHIPPED LOOSE AND CAN BE INSTALLED ON THE OVEN OR AT A REMOTE LOCATION.



Unauthorized service will void manufacturers warranty and is performed at the expense of the purchaser. Prices subject to change without notice. Leads times may vary. All powder system sales final. Manufacturer limited warranty applies. Replacement parts or unit replacement at the discretion of manufacturer. Equipment damaged by shipping is the responsibility of the freight hauler. Documentation of freight damage is the responsibility of the purchaser. Ovens and booths do not carry ETL certification as a unit unless otherwise specified. 15% cancellation fee. Not included: freight, taxes, permitting, regulatory review, inspections, certifications, mechanical or electrical installation, fire suppression or exhaust duct.



**Large Series GAS FIRED Walk-in Ovens – Continued**  
**TOP Burner 8-8-20 Gas Oven Drawing (For Sample Use Only)**



Unauthorized service will void manufacturers warranty and is performed at the expense of the purchaser. Prices subject to change without notice. Leads times may vary. All powder system sales final. Manufacturer limited warranty applies. Replacement parts or unit replacement at the discretion of manufacturer. Equipment damaged by shipping is the responsibility of the freight hauler. Documentation of freight damage is the responsibility of the purchaser. Ovens and booths do not carry ETL certification as a unit unless otherwise specified. 15% cancellation fee. Not included: freight, taxes, permitting, regulatory review, inspections, certifications, mechanical or electrical installation, fire suppression or exhaust duct.